

An ISO 9001:2015 Certified Company



ADITYA ENTERPRISES

Finishing First! _____

**Specialty
Products & Paint
Engineering Services**

Supply of Surface Treatment Chemicals

**Specialty Chemicals / Products & Solutions
for Automotive Paint Shops**

Paint Engineering & Consulting Services

■ BASF

We create chemistry

Chemetall
expect more+

www.adityasurfatech.com



Aditya Enterprises is a leading provider of Paint Engineering & Consulting Services, specializing in the supply of specialty products for industrial paint shops and surface treatment chemicals from Chemetall-BASF. We are committed to delivering next-generation solutions aimed at enhancing automotive paint finish quality, optimizing paint shop equipment, and improving process efficiency.

Our expertise extends beyond products—we offer comprehensive services including plant audits, cost reduction strategies, throughput enhancements, and effective solutions for finishing issues.

Through Aditya Surfatech, we provide end-to-end support in new paint shop projects, plant modifications/upgrades & system process integration.

With over 30 years of experience in the automotive industry across India and International markets, Aditya Enterprises is led by a seasoned Paint Technologist. The company is committed to delivering innovative, efficient, & high-quality solutions tailored to meet the evolving needs of the industry.

Our Vision

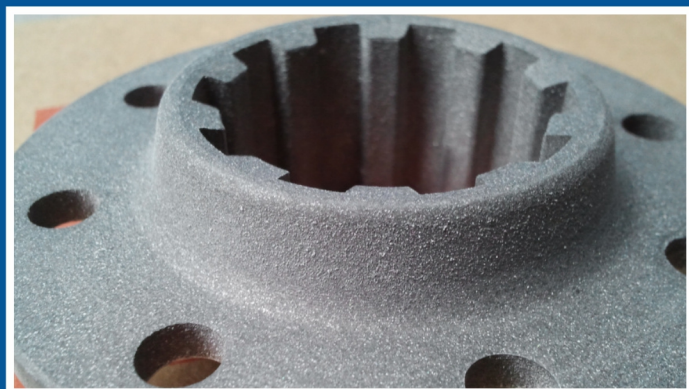
To be India's premier Paint Engineering & Consulting Firm, setting industry benchmarks with innovative solutions, international standards, and unparalleled customer satisfaction—all finishing solutions under one roof.

PHOSPHATING CHEMICALS

GARDOBOND® Conversion Coatings

Range of Phosphate Chemicals from CHEMETALL / BASF. Product range includes Zinc Phosphate, Tri-cation phosphate, Iron Phosphate & Manganese Phosphate.

Chrome & Non- Chrome conversion coatings for Aluminum & its alloys. Nano-Oxilan coatings (thin film) for Multi-metal Pre-treatment in single line. Chemicals for Spray & Dip processes.



GARDOCLEAN®

Cleaners

Wide range of Eco-Friendly cleaners from CHEMETALL / BASF. Alkaline, Acidic Cleaners, "Three in One-Solutions" chemicals for various surfaces like CRS, Aluminum, Galvanized and combination of mix metals.

Low Temperature Products, Cleaners for Industrial component washing machines. All with strong technical service support from Aditya Surfatech / Chemetall Team.





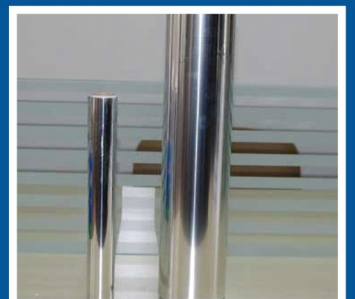
PAINT SHOP DIRT CONTROL & BOOTH CARE PRODUCTS

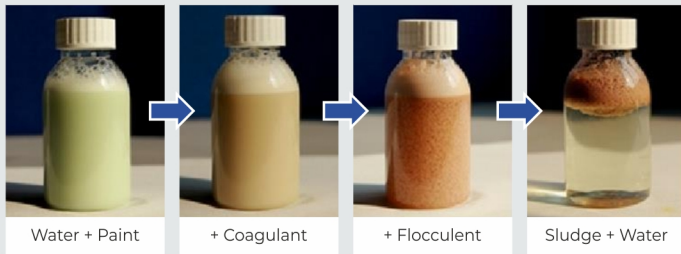
Dirt In Paint is No. 1 issue in every Industrial Paint Shop. Our contamination control products help reduce the dirt / contamination in paint shop to large extent. This is backed by strong service of Contamination Control Program which includes Dirt Analysis, Source identification & Elimination.

Our products and services helps paint shop improve their FIRST TIME OK rates.

Product Range:

- ✦ Tacky Coats
- ✦ Oven Coats
- ✦ Tack Peelable Coatings
- ✦ Non Drying Pastes
- ✦ High-temp Aluminum Foiling
- ✦ Paint Booth Wall Films
- ✦ Lint Free Wipes
- ✦ Paint Strippers



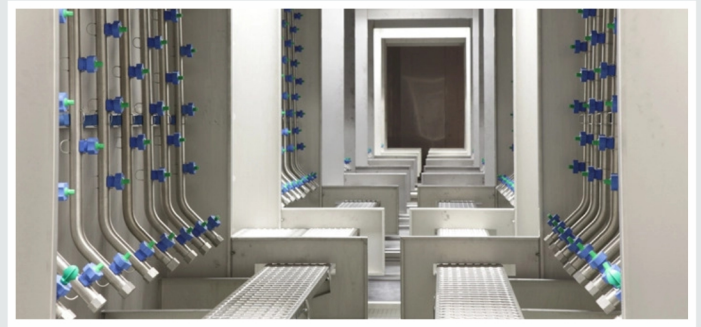


Paint Booth Additives

Effective paint sludge separation is key to the smooth functioning of Paint Booths & ensuing high uptime of paint shops.

The Chemetall / BASF, DETAC sludge treatment chemicals ensure clean water to pumps, helps booth Balancing, supports automated sludge removal systems. The chemicals include Detackifiers, Flocculants, pH control additives & Biocide.

We also offer single component Booth Additives for small paint booths. The chemical dosing rates are set up by our technical service technician and are fully supported by routine site visits & monitoring.



Power Wash Chemicals

For Automotive Plastic Parts (PP/ABS/ NYLON)

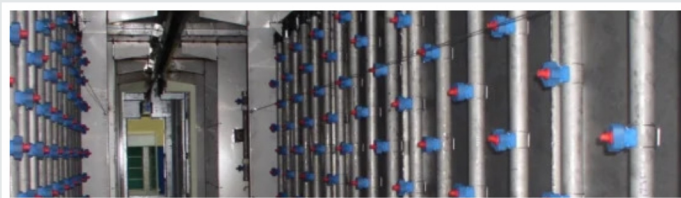
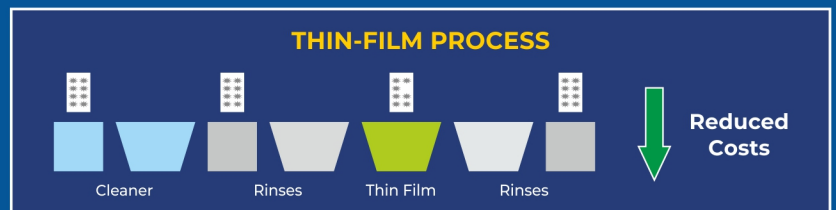
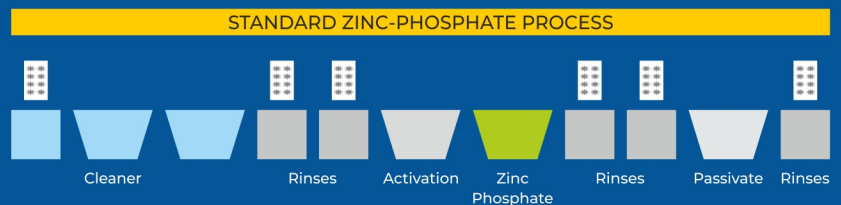
Removing dirt on plastic parts is tedious job due to static nature of plastic surface. We offer, cleaners for plastics prior to painting & also anti-static agents to reduce surface static charge. These used in spray cleaning process (Power-Wash).

Our products are suitable for range of plastics like PP, ABS, Nylon as well for FRP materials containing mold-release agents. The great advantage of the products is it can be used at ambient temperature thus helping save huge energy costs.

Nano Conversion Coatings: Oxilan

Innovative eco-friendly Pretreatment Technology, your partner in sustain-ability drive

- ✦ Suitable for Multi- metal Applications
- ✦ Virtually sludge Free
- ✦ Low water & energy consumption
- ✦ Reduced process & investment costs
- ✦ Higher Productivity

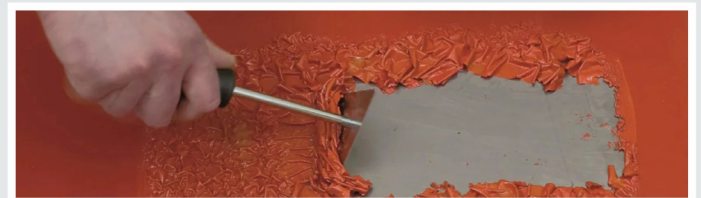


Aluminium Pre-Treatment

Chemtalls Aluminum Pre-treatment prior to Paint, wet paint, powder coat makes perfect surface.

- ✦ Cleaners & Conversion coatings for All kind of Aluminum Parts
- ✦ Chrome free Pre-treatment
- ✦ Easy Maintain process
- ✦ Eco -friendly products

We also serve Architectural & Construction industry product requirements including Anodizing.



Paint Strippers : GARDOSTRIP®

Painting fixtures needs to be cleaned / stripped off to remove excess paint on it.

Also sometimes rejected painted parts are required to be stripped off.

We offer range of Paint Strippers.

- ✦ Conventional strippers; solvent based
- ✦ Water based Paint strippers operate at 50-60°C
- ✦ Acidic / Alkaline Strippers

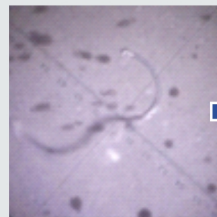


Planning to set-up **Greenfield / Brownfield Industrial Paint-Shop?** We are here to support you with **best of industry knowledge & expertise.**

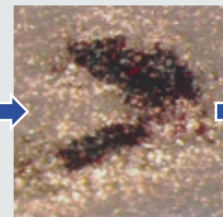


Paint Engineering & Consulting Services

- ✦ Complete support for setting up new paint shops : Green field / Brown field
- ✦ From RFQ till plant commissioning
- ✦ Ensure latest plant & process technologies; Plant Layout optimization
- ✦ Project cost estimations: plant supplier proposals evaluations/ comparisons
- ✦ Support in installation / commissioning
- ✦ Paint shop through-put improvement studies, cost reduction, new processes / technology implementation



Dirt Observe & Analyze



Identify Source



Eliminate & Create ref.

DIRT & Contamination Control Program

We Specialize in paint shop audits which help improve their productivity & plant efficiency.

Our Dirt & Contamination Control Program are specially designed to help industrial paint shops to identify source, control and eliminate dirt levels / counts in paint finish.

These programs are conducted with high skill and precision.

PAINT BOOTHS & PLANTS



We help things move forward,
through effective co-ordination
among all stakeholders



**ADITYA
ENTERPRISES**

Finishing First! —————

- 📍 3, Bldg. 'E', Shraddha Garden, Gawade Park, Chinchwad, Pune - 411033. MH. India.
- ☎ +91 95116 52836 / 76200 24307
- ✉ mk@adityasurfatech.com
adityaenterprises881@gmail.com
- 🌐 www.adityasurfatech.com
- 🌐 <https://www.linkedin.com/in/milindkhedekar/>

Scan for More Details



Scan for Location

